



ENZO

L a u n c h i n g 2 0 2 4



SIMAN  
Y A C H T S

w w w . s i m a n y a c h t s . c o m



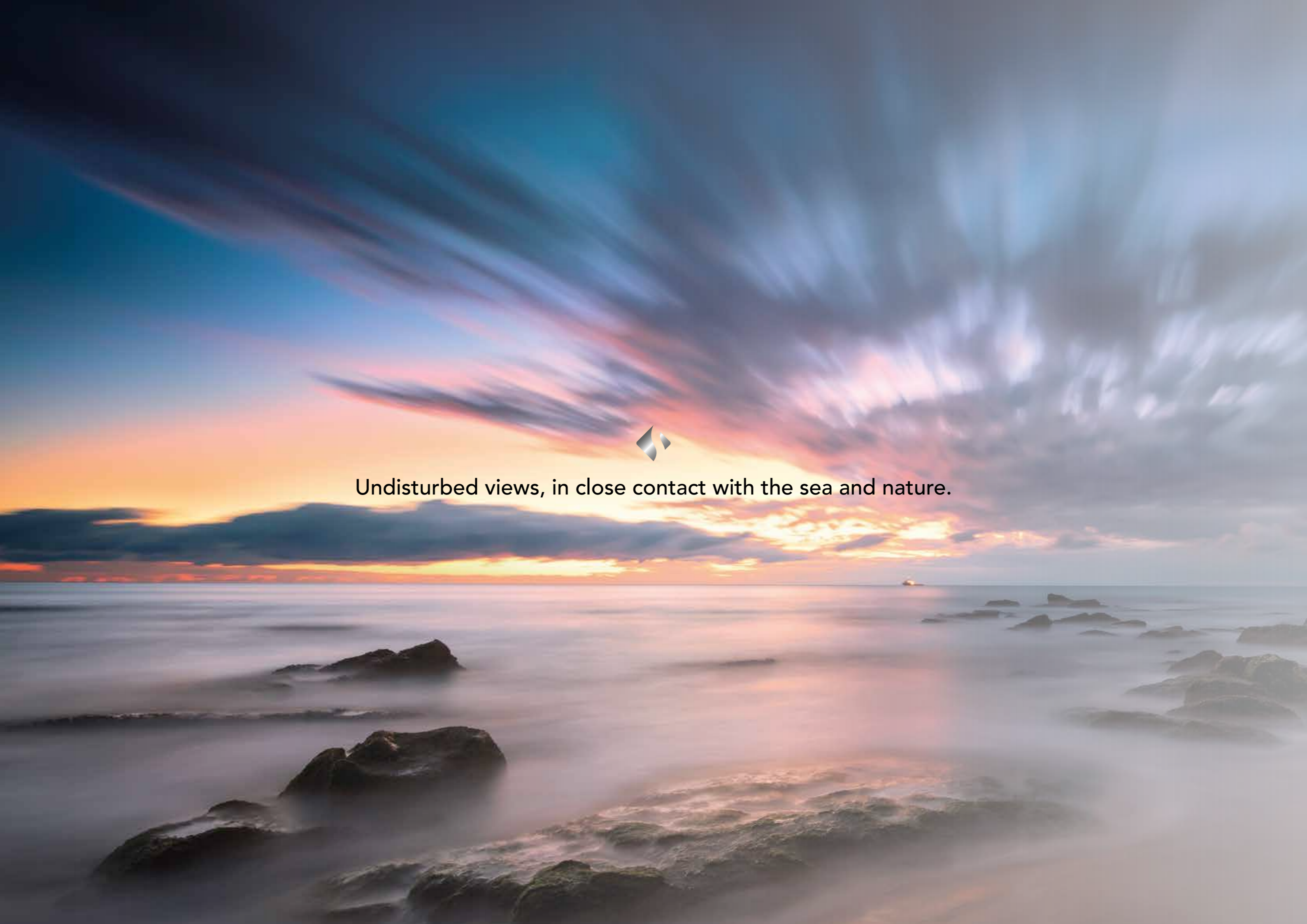


# ENZO

Launching 2024

Enzo is an innovative design to live life on board in a more informal way, with ample outdoor areas offering undisturbed views and in close contact with sea and nature. We emphasized the importance of a 'functional design', which takes up the concepts of the Bauhaus of the early 1900s:  
Trying to match the shape with the function of the object, finding a balance between the useful and the beautiful.

*Hansin Betts*



Undisturbed views, in close contact with the sea and nature.





Synthesis of balance between the useful and the beautiful.

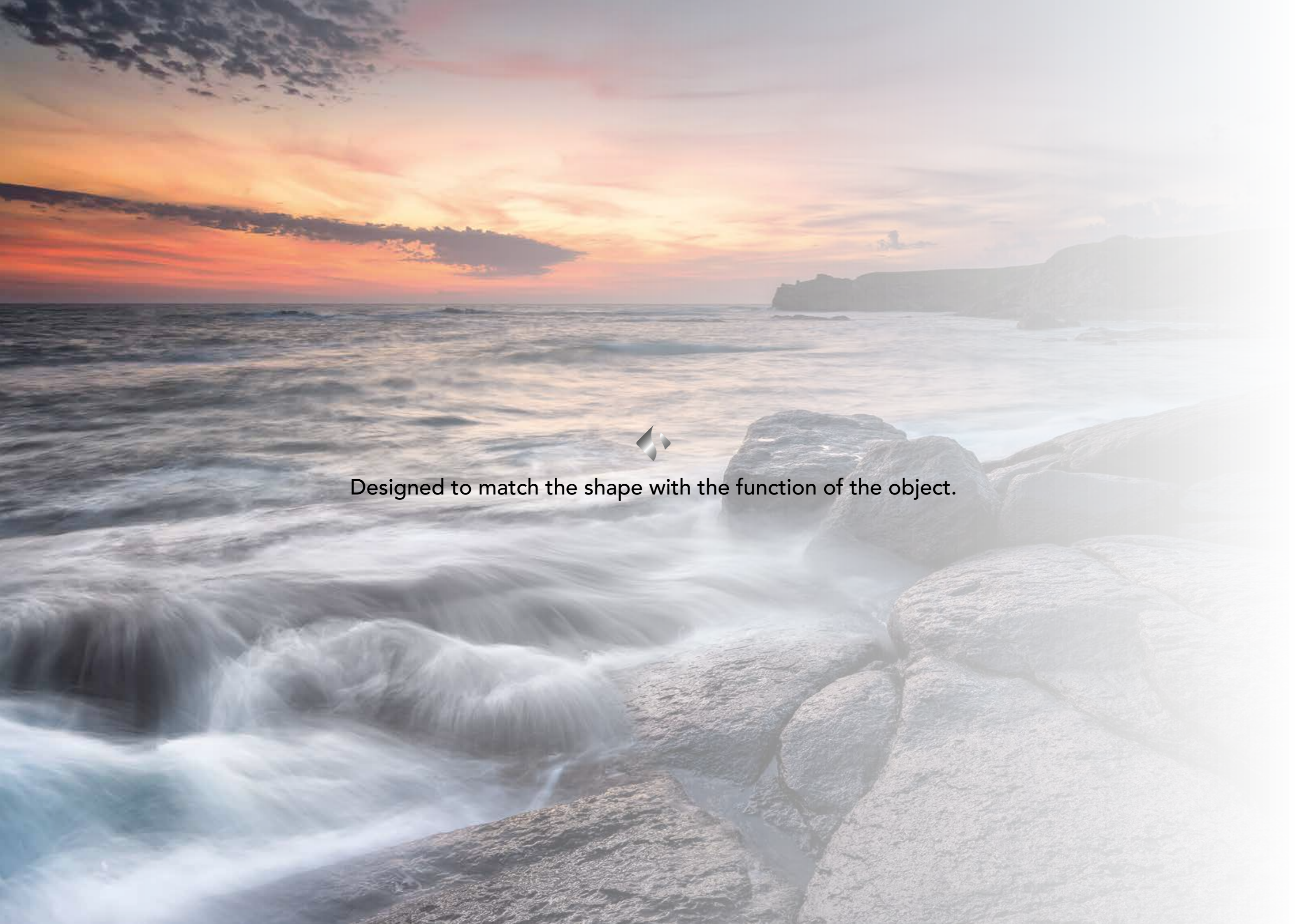


M/Y 50 M  
( CONSTRUCTION # 1980 )  
HORACIO BOZZO DESIGN





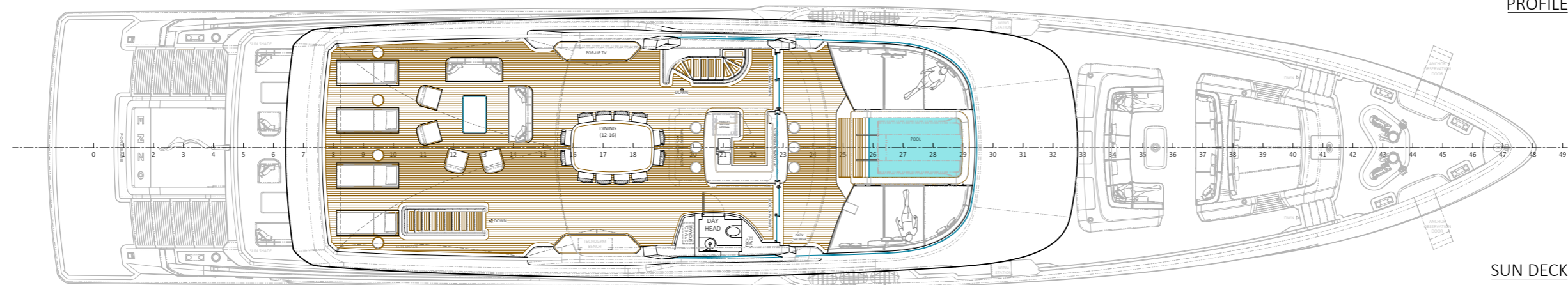




Designed to match the shape with the function of the object.

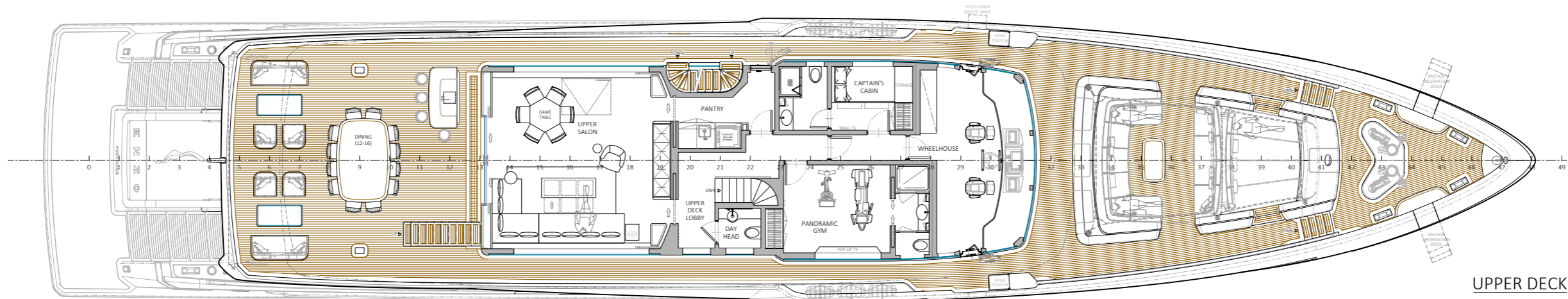


PROFILE

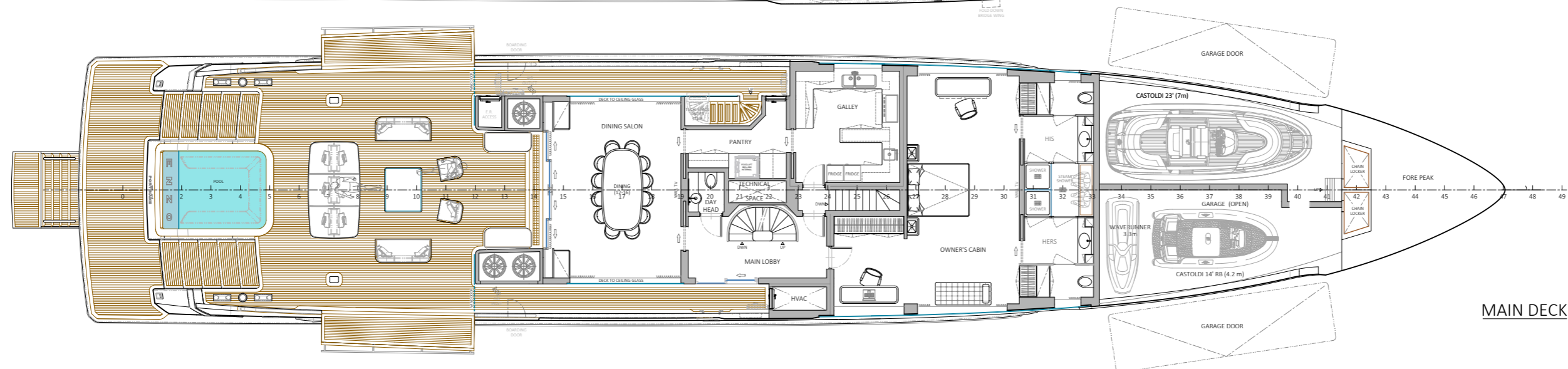


SUN DECK

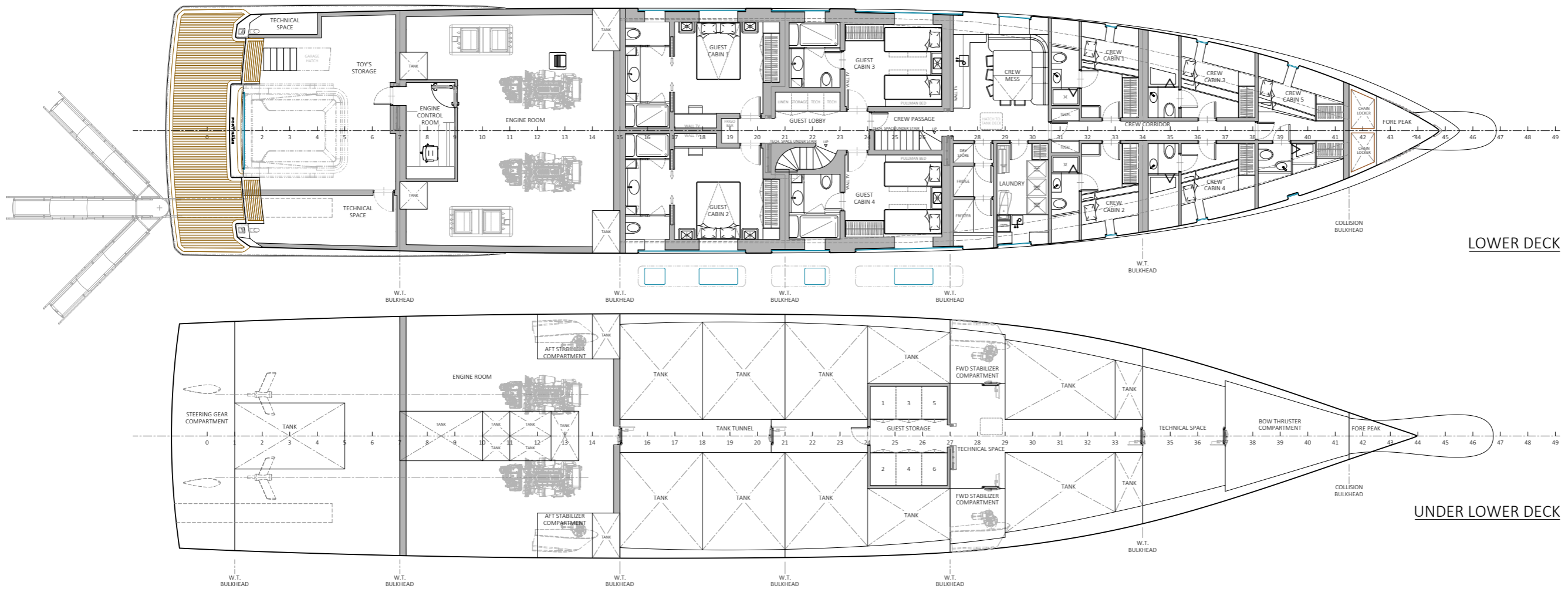
**GENERAL ARRANGEMENT**  
SIMAN YACHTS M/Y 50 ENZO  
**HORACIO BOZZO DESIGN**



UPPER DECK



MAIN DECK



# GENERAL ARRANGEMENT

S I M A N Y A C H T S M / Y 5 0 E N Z O



## MAIN DIMENSIONS

Length overall	49.85 m	(163' 06")
Waterline length	44.80 m	(147' 00")
Breadth (max)	9.20 m	(30'02")
Dive	2.45 m	(08'00")
Estimated Gross Tonnage	499 GT	
Full Load Displacement	510 tons	

## TANKS CAPACITY

Fuel oil	60.000 lts.	(15.850) gals
Fresh water	15.000 lts.	(3.960) gals
Grey Water	3.500 lts.	(925) gals
Black Water	3.500 lts.	(925) gals

## PROPULSION

Main Engines	2 x Caterpillar C32 ACERT	1081 kW 2300 rpm
--------------	---------------------------	------------------

## SPEED

15 knots at max power and half load displacement
--

## RANGE

4000 nm at 10.0 knots
-----------------------

## EXTERIOR DESIGN

Horacio Bozzo Design
----------------------

## NAVAL ARCHITECTURE

Axis Group Yacht Design
-------------------------

### **MACHINERY**

Two (2) main engines: CAT C32 Acert 1081kW 2300 RPM  
 Two (2) Generators: approx 118 KW  
 Two (2) pair of Electrical Stabilizers  
 One (1) Electrical Bow Thruster: 110 KW  
 Two (2) 6,000 lt/24h each water-makers

### **DOUBLE BOTTOM**

Engine room bilges, central area with tanks, area for storage, technical area for machinery arrangement, bow- thruster compartment, chain lockers and forward peak.

### **LOWER DECK**

Steering gear/technical area, lazarette with toy's storage. Control room and engine room.

#### **Owner/Guests area**

Four Guests' cabins with a double bed and with ensuite bathrooms with shower stall. Guests corridor with central structural staircase up to the Main lobby and access door to Crew corridor.

#### **Crew area**

Port Side Crew mess, Stbd side fridge/freezer room and fully equipped Laundry. Five crew cabins with bunked beds and bathroom.

### **MAIN DECK**

Access via retractable aft gangway, raised mooring area, side staircases down to the aft peak.

One large endless pool in the aft. Large aft cockpit with foldable bulwark each sides. Access to the saloon through one weathertight sliding glazed door; large dining area. Central staircase down to the accommodation area and up to the upper deck lobby area; port side small pantry with direct access to the Galley; day-head. Main deck lobby on Starboard side with direct access to Owner's Cabin with two bathroom with one shower each and a steam shower in common. Technical peak, crew exit and tender well with tender and crane on the deck, rescue boat area.

### **UPPER DECK**

Large aft open area with lounge bar. Stbd staircase up to sun deck, weathertight sliding glazed door, large upper deck saloon, Port side pantry, Stbd side dayhead, Stbd side Panoramic Gym, Port side captain's cabin, wheelhouse, Fwd external sitting area with sun beds, Fwd Mooring area with accesso to fore peaks.

### **SUN DECK**

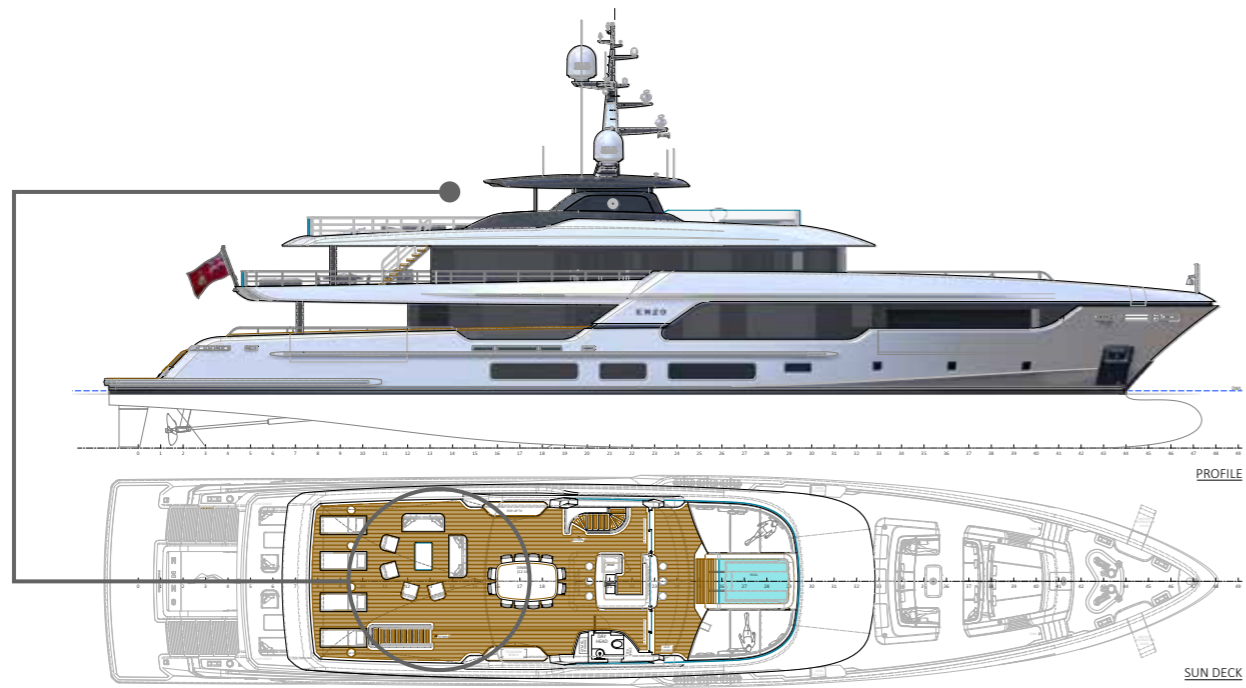
Large open external area with fwd lounge bar and Stbd side day head, one large pool with sun beds to the sides.

### **OTHER EQUIPMENT**

One (1) Retracting swimming ladder. One (1) Retractable stern gangway  
 Two (2) foldable bulwark, One (1) Rescue Boat, Two (2) side shell door for garage.

## **TECNICAL SPECIFICATION**

S I M A N Y A C H T S M / Y 5 0 E N Z O

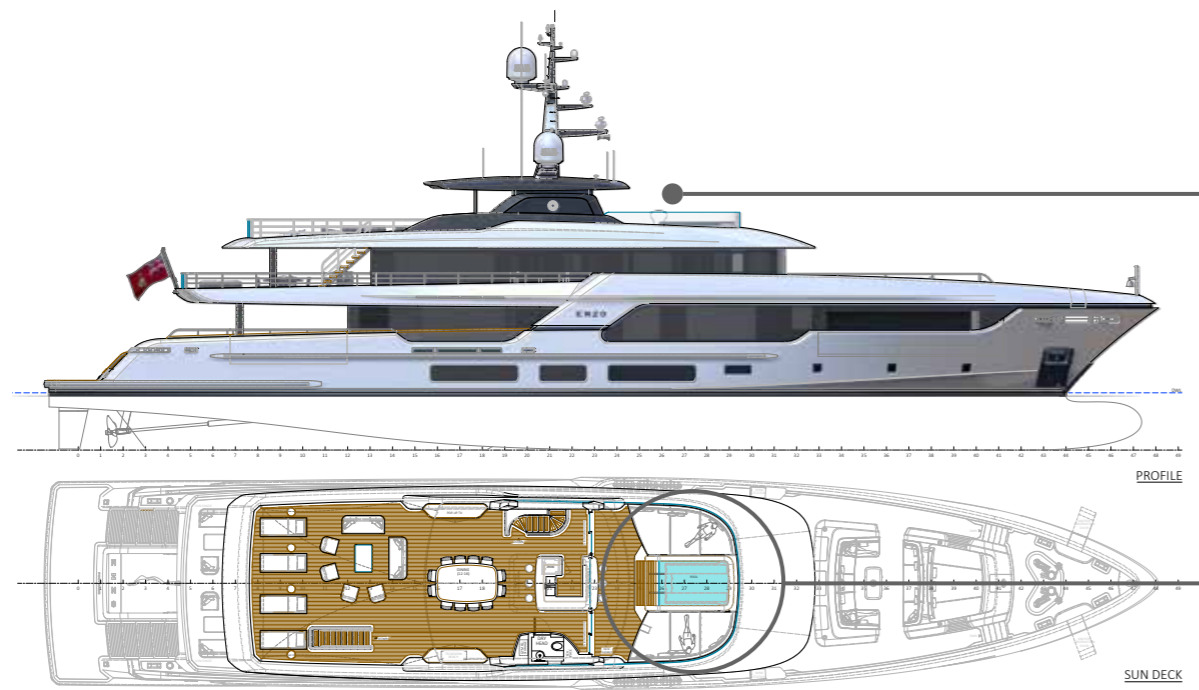






RENDERING

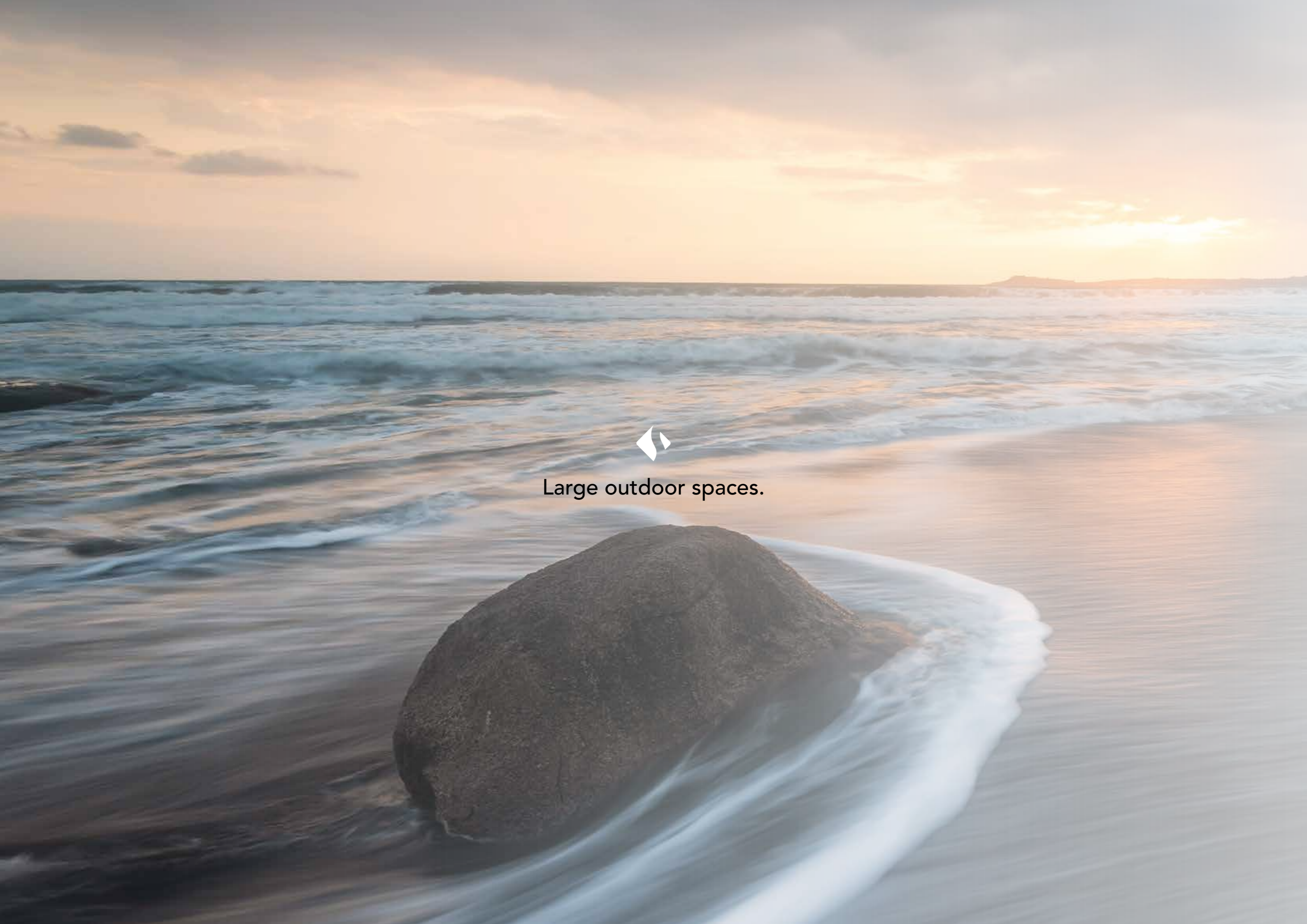
S I M A N   Y A C H T S   M / Y   5 0   E N Z O





RENDERING

S I M A N   Y A C H T S   M / Y   5 0   E N Z O



Large outdoor spaces.

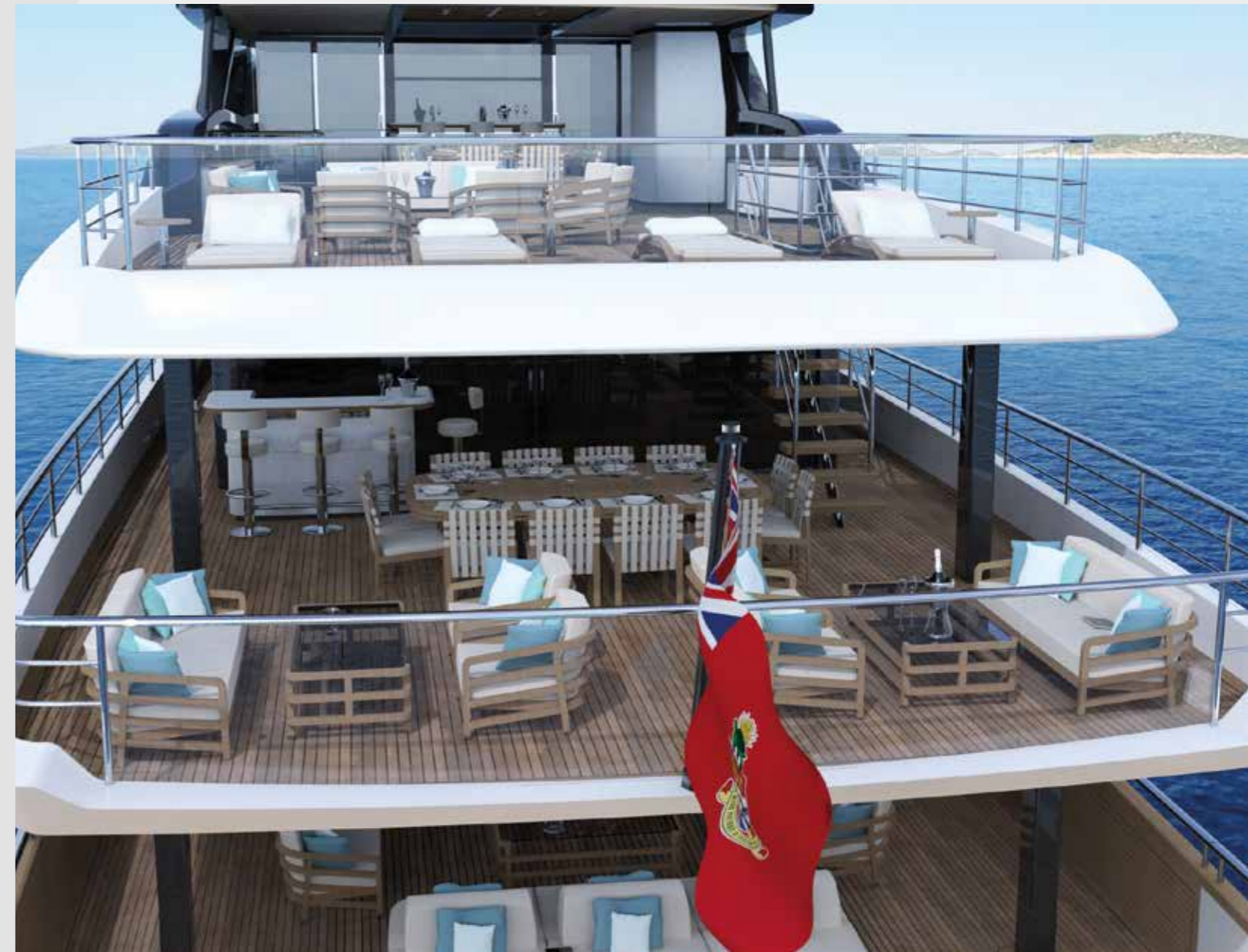






RENDERING

S I M A N Y A C H T S M / Y 5 0 E N Z O

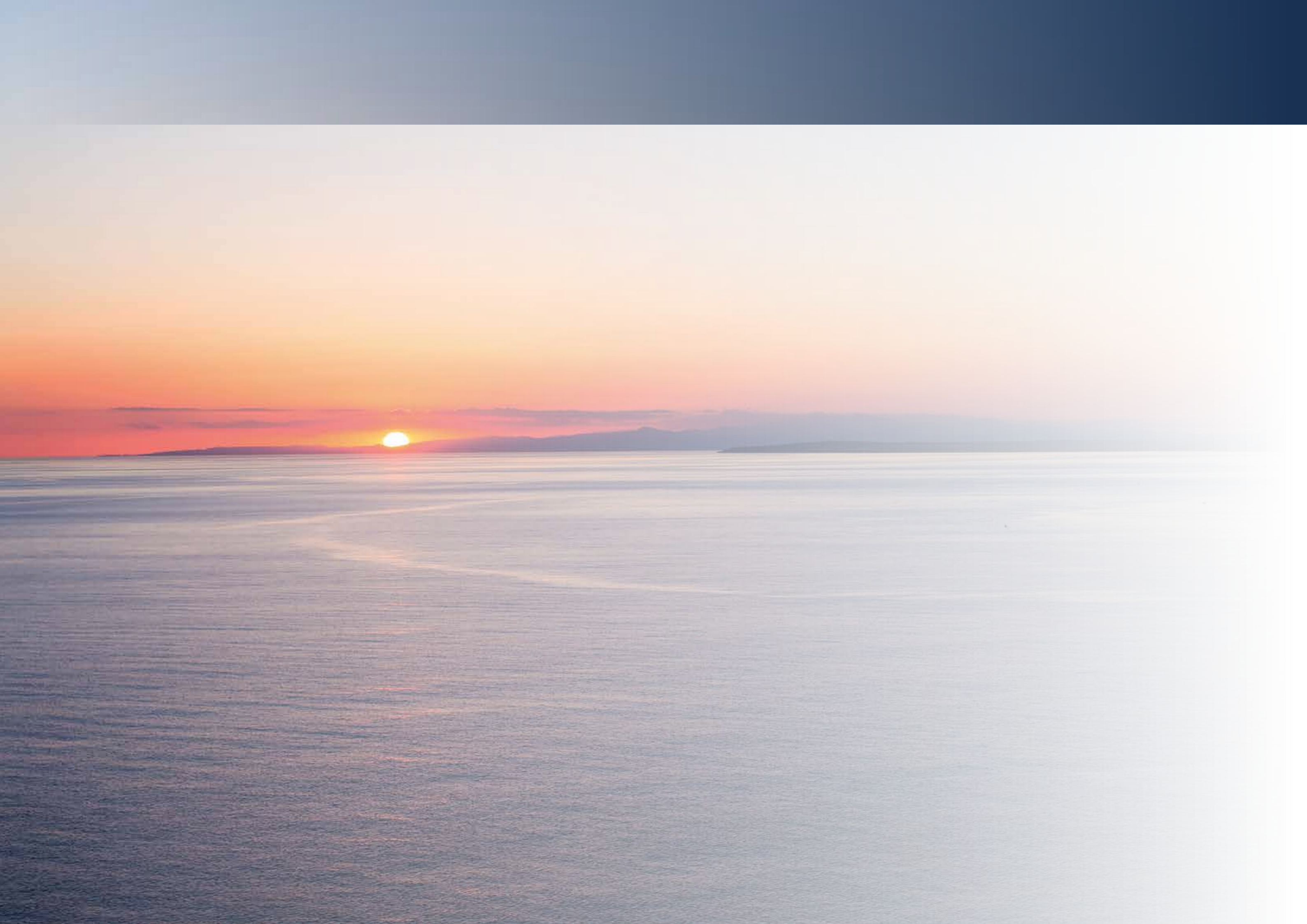






## RENDERING

S I M A N Y A C H T S M / Y 5 0 E N Z O



# ENTERTAINMENT SYSTEM

S I M A N Y A C H T S M / Y 5 0 E N Z O

## PERFORMANCE MATRIX

DECK	AREA	SPEAKERS	PLEX (AVOD)	SAT DECODER* (ASSIGNABLE)	PARTY MODE	CONTROL	AIRPLAY / BLUE-TOOTH	TVS
Sun Deck	Sun Deck	6 Stereo SPK 2 Subwoofer	-	-	✓	iPad Mini	Airplay	-
Upper Deck	External Fwd	2 Stereo SPK 1 Subwoofer	-	-	✓	iPad Mini	Airplay	-
Upper Deck	Wheelhouse	2 Stereo SPK	-	-	-	OEM	Bluetooth	-
Upper Deck	Captain Cabin	2 Stereo SPK	✓	✓	-	iPad Mini	Airplay	32" Full HD
Upper Deck	Vip Cabin	2 Stereo SPK	✓	✓	-	iPad Mini	Airplay	32" Full HD
Upper Deck	Upper Salon	5 Surround SPK 1 Subwoofer	✓	✓	✓	iPad Mini	Airplay	75" 4K
Upper Deck	External Aft	4 Stereo SPK 1 Subwoofer	-	-	✓	From Main Zone	Subzone of Upper Salon	-
Main Deck	Owner Cabin	5 Surround SPK 1 Subwoofer	✓	✓	-	iPad Mini	Airplay	75" 4K
Main Deck	Galley	2 Stereo SPK	-	-	-	OEM	Bluetooth	-
Main Deck	Dining Salon	5 Surround SPK 1 Subwoofer	✓	✓	✓	iPad Mini	Airplay	55" 4K
Main Deck	External Aft	4 Stereo SPK 1 Subwoofer	-	-	✓	From Main Zone	Subzone of Dining Salon	-
Lower Deck	Crew Cabin (x5)	2 Stereo SPK	-	-	-	OEM	-	-
Lower Deck	Crew Mess	2 Stereo SPK	✓	✓	-	iPad Mini	Airplay	32" Full HD
Lower Deck	Guest Cabin (x4)	2 Stereo SPK	✓	✓	-	iPad Mini	Airplay	32" Full HD
Lower Deck	Beach Area	2 Stereo SPK	-	-	✓	iPad Mini	Airplay	-

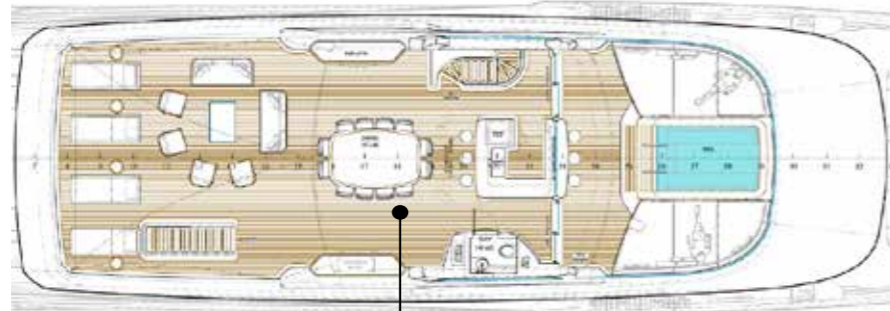
### GLOSSARY:

VoD: Video On Demand Client/Server System

OEM: Original Equipment Manufacturer (usually manual or IR remote)

SAT Receiver\*: 4x predisposition assignable (Decoders are owner supply)

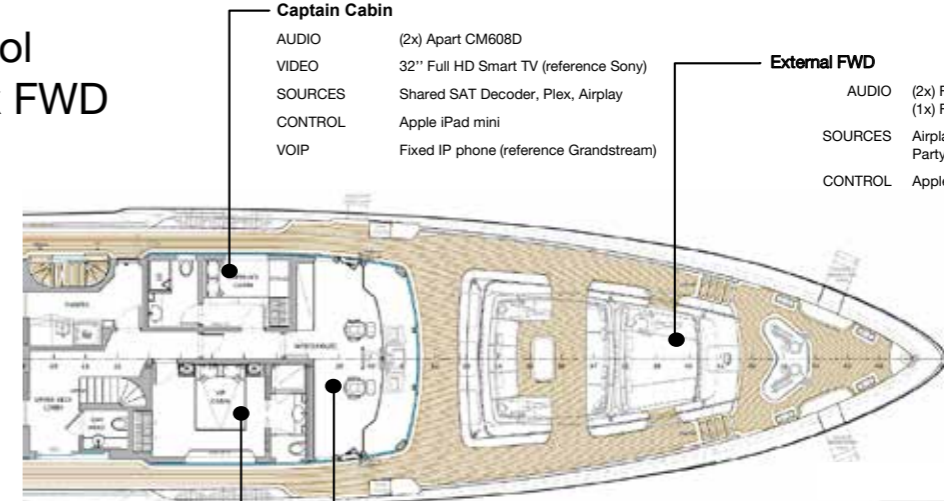
## AV & Control Sun Deck



- Sun Deck**
- (6x) Fusion FM-F77RW AUDIO
  - (2x) Fusion FM-S10RW
  - Airplay from centralized system SOURCES
  - Party Mode
  - Apple iPad mini CONTROL

**Note:** Final positions of speakers and sources will be defined in accordance with the latest layout, and the audio configuration can be revised in case of Owner/Shipyard specific requests.

## AV & Control Upper Deck FWD



- Captain Cabin**
- (2x) Apart CM608D AUDIO
  - 32" Full HD Smart TV (reference Sony) VIDEO
  - Shared SAT Decoder, Plex, Airplay SOURCES
  - Apple iPad mini CONTROL
  - Fixed IP phone (reference Grandstream) VOIP

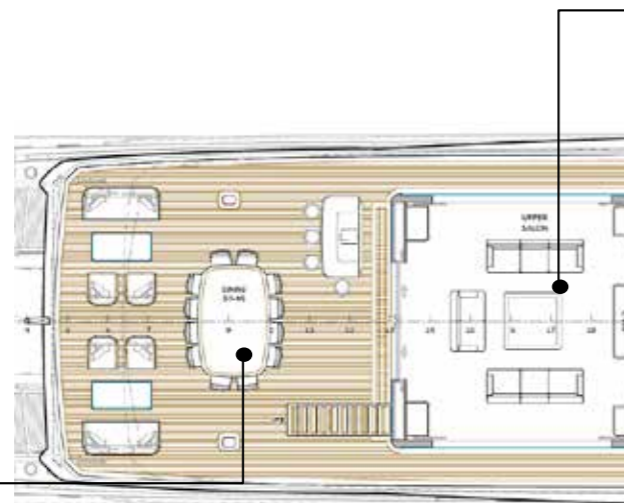
- External FWD**
- (2x) Fusion FM-F77RW AUDIO
  - (1x) Fusion FM-S10RW
  - Airplay from centralized system SOURCES
  - Party Mode
  - Apple iPad mini CONTROL

- Vip Cabin**
- (2x) Apart CM608D AUDIO
  - 32" Full HD SmartTV (reference Sony) VIDEO
  - Shared SAT Decoder, PLEX, Airplay SOURCES
  - Apple iPad mini CONTROL
  - Cordless IP phone (reference Grandstream) VOIP

- Wheelhouse**
- (2x) Apart CM608D AUDIO
  - Compact Marine Stereo, Bluetooth SOURCES
  - Original Manufacturer Equipment CONTROL

**Note:** Final positions of speakers and TV will be defined in accordance with the latest layout, and the audio configuration can be revised in case of Owner/Shipyard specific requests.

## AV & Control Upper Deck AFT

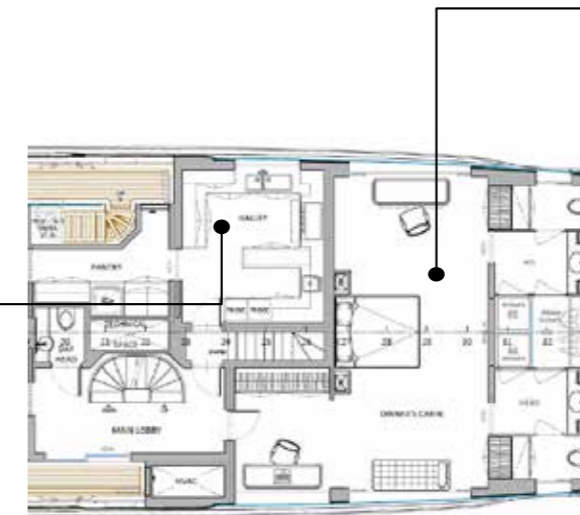


- Upper Salon**
- (5x) Apart CM608D AUDIO
  - (1x) Dali Sub-C8D
  - 75" 4K Smart TV (reference Sony) VIDEO
  - Shared SAT Decoder, Plex, Airplay SOURCES
  - Party Mode
  - Apple iPad mini CONTROL
  - Cordless IP phone (reference Grandstream) VOIP

- External Aft**
- (4x) Fusion FM-F77RW AUDIO
  - (1x) Fusion FM-S10RW
  - Subzone of Upper Salon SOURCES
  - From main zone CONTROL

**Note:** Final positions of speakers and TV will be defined in accordance with the latest layout, and the audio configuration can be revised in case of Owner/Shipyard specific requests.

## AV & Control Main Deck FWD

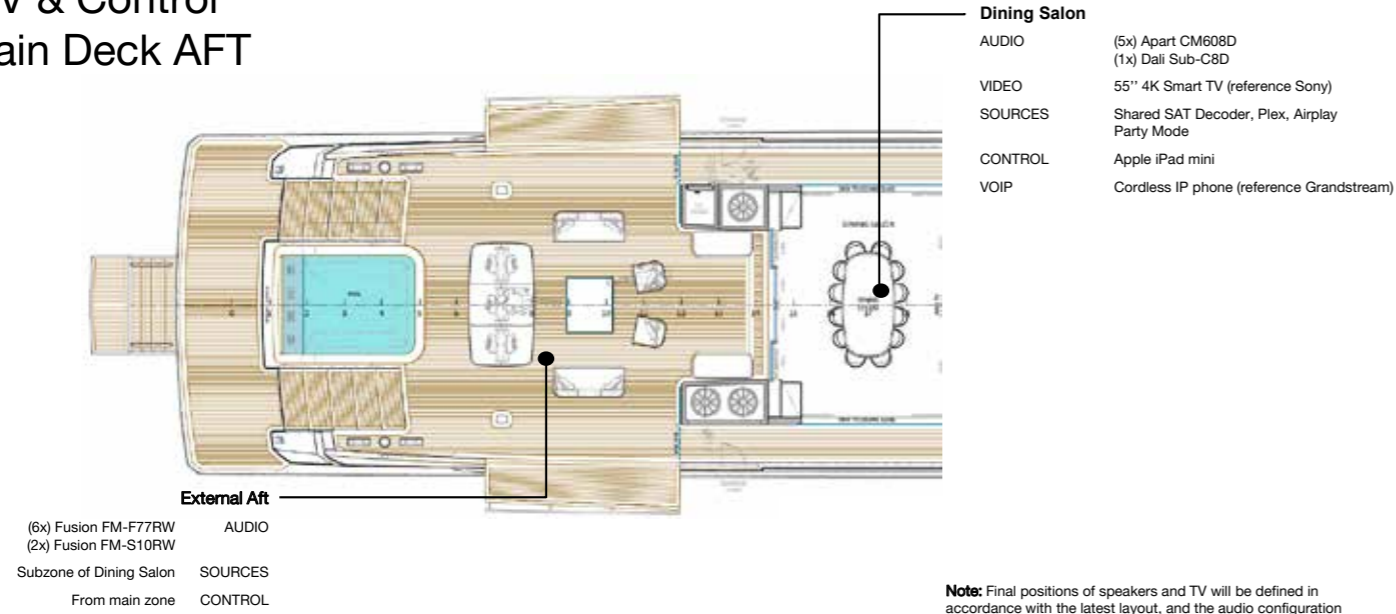


- Galley**
- (2x) Apart CM608D AUDIO
  - Compact Marine Stereo, Bluetooth SOURCES
  - Original Manufacturer Equipment CONTROL
  - Fixed IP phone (reference Grandstream) VOIP

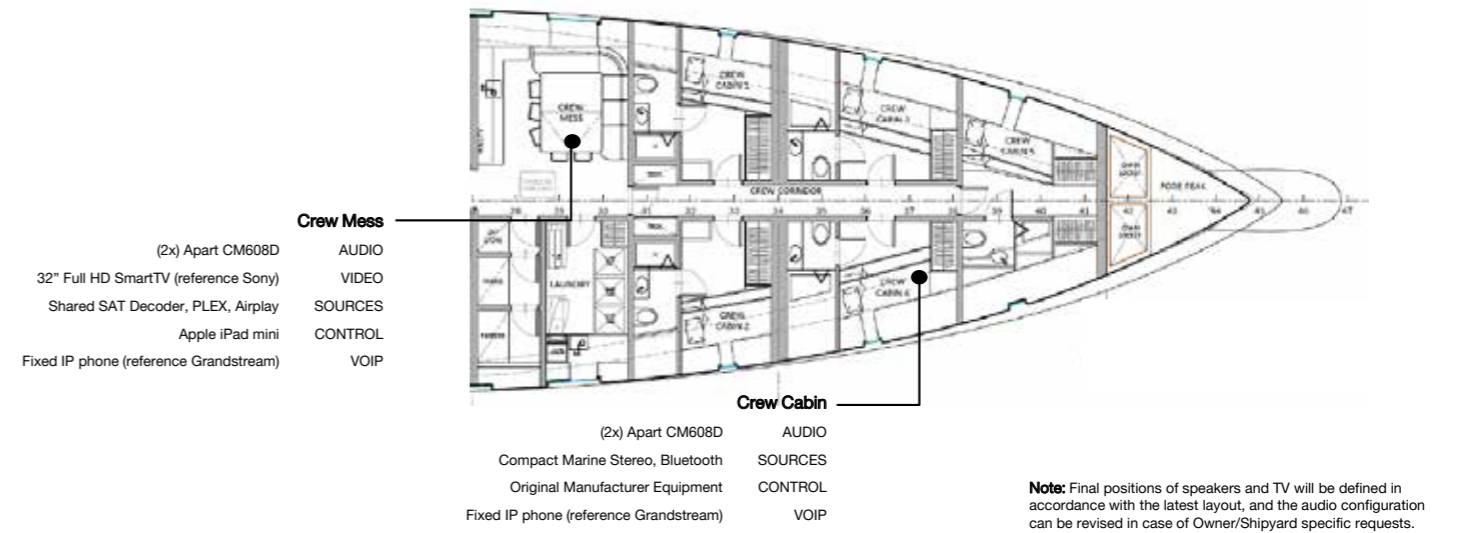
- Owner Cabin**
- (5x) Apart CM608D AUDIO
  - (1x) Dali Sub-C8D
  - 55" 4K Smart TV (reference Sony) VIDEO
  - Shared SAT Decoder, Plex, Airplay SOURCES
  - Apple iPad mini CONTROL
  - Cordless IP phone (reference Grandstream) VOIP

**Note:** Final positions of speakers and TV will be defined in accordance with the latest layout, and the audio configuration can be revised in case of Owner/Shipyard specific requests.

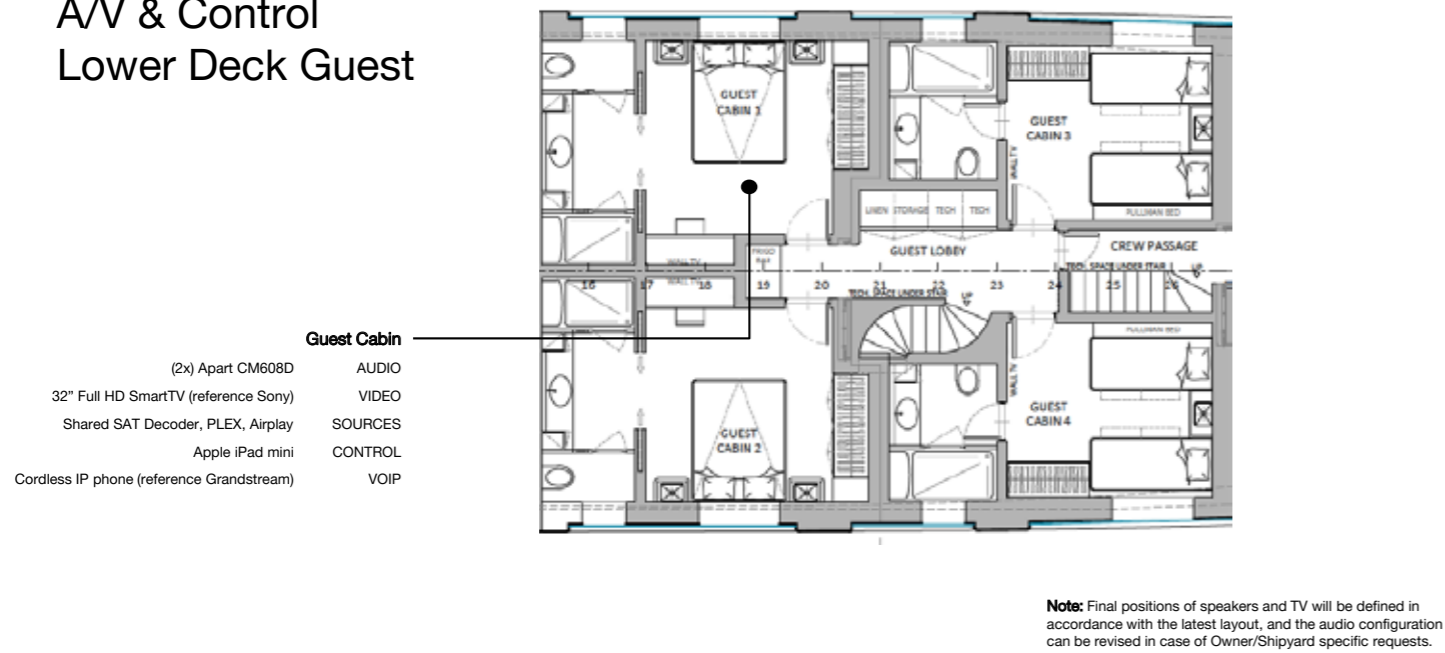
## AV & Control Main Deck AFT



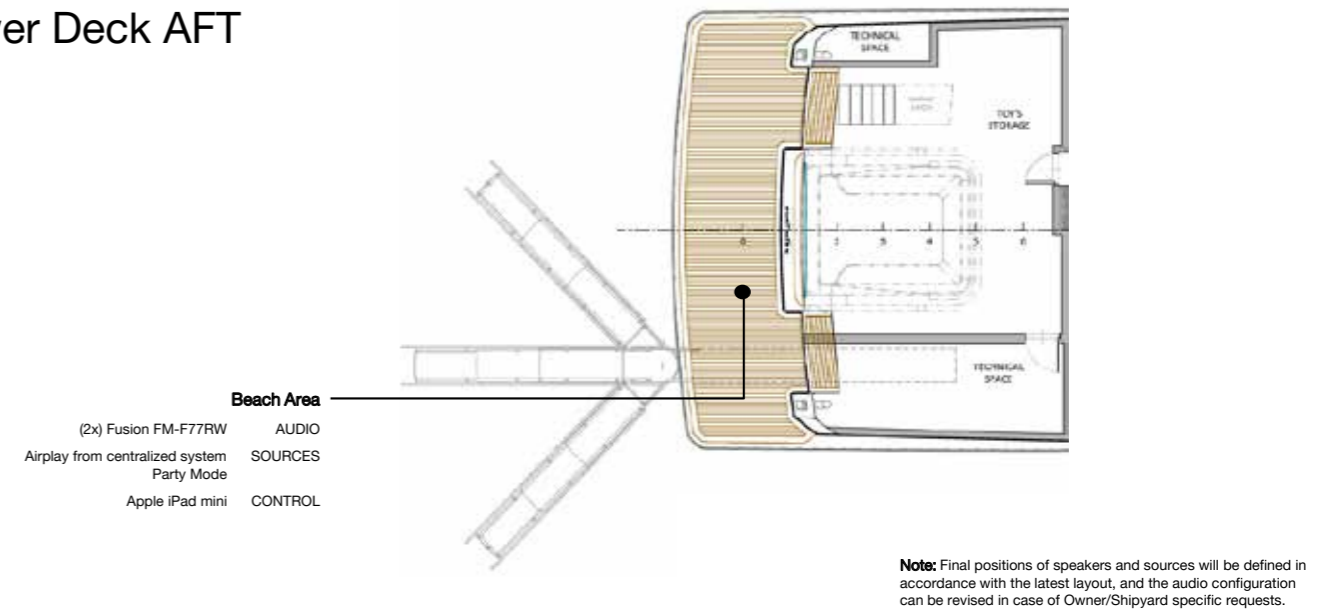
## AV & Control Lower Deck Crew



## AV & Control Lower Deck Guest



## AV & Control Lower Deck AFT





# ENZO

L a u n c h i n g 2 0 2 4





S.I.M.A.N. srl  
Soc. Ind. Mecc. Affini Navale  
Via del Molo, 64 - 19126 La Spezia (ITALY)  
Tel. +39 0187 515275  
info@simansrl.com

w w w . s i m a n s r l . c o m